

VH- Z Series

Large Air Flow Type Central Dust Collector



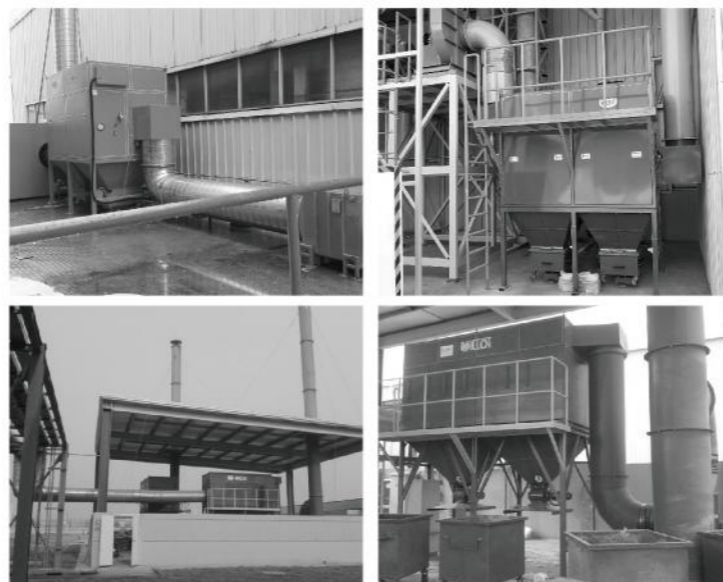
• Features

- Pulse jet cleaning method for the filter makes machine to work continuously. User can set the pulse frequency depending upon the working requirements.
- The filter material is polyester with PTFE coated, which can filter 99.9% dust at 0.3 microns.
- Vertical installation would protect the filter from dust accumulation, which would ultimately increase the filter life, reduce gasket leaks, and result in better pulse cleaning.



• Applications

Suitable for capacitance spray operations, tin packaging operations, CCL operations, spraying production line operations, ceramic raw embryo processing, polishing workshop, welding smoke purification and other multi-site centralized dust conditions.



• Optional Configurations

- › Multi tower light
- › Stainless steel version
- › Explosion proof version
- › Activated carbon filter
- › Converter
- › Additional H13/H14 filter
- › Air speed sensor
- › Temperature sensor
- › Dust concentration detector
- › Customizable collection box
- › Tank level alarm
- › Gate valve
- › Central control system with variable frequency and constant pressure



• Technical Parameters

| Model | VH-Z-8500 | VH-Z-16000 | VH-Z-19000 | VH-Z-21000 | VH-Z-23000 | VH-Z-30000 |
|-------------------------------------------------------|-----------------------------------------------------------------------------------------------------------------------------------------|---------------------------------|---------------------------------|---------------------------------|---------------------------------|---------------------------------|
| Voltage(V / Hz) | 380 / 50 | | | | | |
| Air flow (m ³ /h) / (CFM) | 5710~10600 / 3360~6240 | 10600~21200 / 6240~12470 | 13200~26300 / 7765~15470 | 17500~22450 / 10300~13200 | 19650~25250 / 11560~14850 | 28100~36450 / 16530~21450 |
| Power(kW) / (HP) | Calculate the total pressure/static pressure according to the total resistance of the system, and then select the appropriate fan power | | | | | |
| Filter area (m ²) / (sq.ft) | 84 / 904 | 170 / 1830 | 204 / 2196 | 204 / 2196 | 306 / 3294 | 360 / 3875 |
| Filter efficiency | 99% | | | | | |
| Capacity of the dust container(L) / (gal) | 70 / 18.5 | 50×2 / 13.2×2 | 50×2 / 13.2×2 | 50×2 / 13.2×2 | 50×2 / 13.2×2 | 50×3 / 13.2×2 |
| Noise dB (A) | 82±2 | 83±2 | 85±2 | 85±2 | 88±2 | 90±2 |
| Filter cleaning method | pulse jet cleaning+holder on dust collecting box | | | | | |
| Air inlet Dia. (mm) / (in) | Ø350 / 14 | Ø500 / 20 | Ø550 / 22 | Ø550 / 22 | Ø600 / 24 | Ø650 / 26 |
| Dimensions (Excluding the Blower) [LxWxH] (mm) / (in) | 1450*1134*1963 / 57.1*44.6*77.2 | 1840*1350*2075 / 72.4*53.1*81.7 | 2000*1350*2075 / 78.7*53.1*81.7 | 2000*1350*2075 / 78.7*53.1*81.7 | 2500*1500*2200 / 98.4*59.1*86.7 | 2500*1500*2400 / 98.4*59.1*94.5 |

The air flow and Negative pressure is adjustable according to the actual condition, and then choose the bigger or more suitable power machine.

*Note: The mentioned values of Airflow and the Pressure may vary slightly with change in air inlet size.